

COUNTRIES PATHWAY

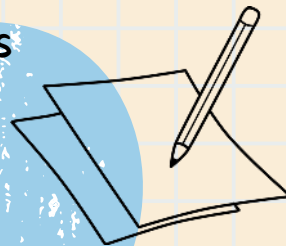


SPRING 1

ENGLISH

Functional Skills

We will be using the Second World War as a theme to help KS4 students build Functional Skills English Entry 1 to Level 1, through a cross-curricular approach. They will read wartime texts for context, write practical pieces like leaflets or letters, and discuss key events to develop speaking and listening. Linking English tasks to real historical content makes the skills more engaging and meaningful.



PHYSICAL EDUCATION

Students have options within PE: Dance, Hiking, Racket sports, team games, fitness
Students are making choices about the physical activities they want to take part in.



SPRING 1

COUNTRIES PATHWAY

The KS4 curriculum is underpinned by The Preparing for Adulthood curriculum and is a pathway to formal qualifications. KS4 focuses on supporting young people to develop independence, employment skills, community participation, good health, and independent living. It provides a structured framework to help students transition smoothly from school to adult life by building practical life skills, confidence, and long-term planning.

RELIGIOUS EDUCATION

World Views

Sikhism and its values.
How do Sikhs show commitment?
AQA unit award - introduction to Sikhism.

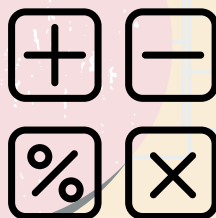
PSHE

Relationships and Sexual Health

This term we will be looking at safe relationships, managing feelings, and changing and growing.

MATHS

Working towards Functional Skills, students will continue to build on their learning from the autumn term. Entry 1 - 3 learners will further develop their confidence with the four operations, while Level 1 students will move on to applying their skills to fractions and decimals.



COMPUTING

Being safe and responsible online

This term we will be looking at the foundations of safe and responsible online behaviour.



ABOUT KS4

In Key Stage 4, our curriculum is designed to prepare students for adulthood. We offer accreditations in English and Maths through Functional Skills and Certifications, ranging from Entry Level 1 to Level 1/2. Students will also have the chance to build up a portfolio of AQA unit awards in a variety of topics such as animal care and history.

Our goal is for pupils to gain the qualifications and experiences they need to access the next appropriate course, apprenticeship or pathway in their education. We also support pupils to confidently apply their skills, knowledge and understanding in a wide range of real-life situations.

During Key Stage 4, pupils will:

- Complete a baseline assessment within their first six weeks.
- Access carefully planned lessons that develop and strengthen key skills and knowledge.
- Be encouraged to discuss, debate and share their views on topics that matter to them.
- Receive ongoing assessment (both formative and summative) so teachers can tailor learning to their needs.
- Follow a carefully sequenced curriculum where new learning builds on what they already know and can do, working towards clear end points.

By the end of Key Stage 4, pupils will:

- Be digitally confident and able to keep themselves safe online.
- Have developed stronger social, communication and interaction skills.
- Be able to apply their knowledge, understanding and skills in a wide range of contexts.
- Achieve qualifications and experiences that support their next step in education or training.
- Communicate their needs, preferences and ideas clearly in different settings.
- Show greater independence in managing physical, sensory and emotional challenges.
- Demonstrate increased confidence and resilience when facing real-world and work-related situations.
- Be well prepared for a positive transition into adulthood, with support tailored to both their therapeutic and academic development.

KS4 ENGLISH FUNCTIONAL SKILLS

During this half term students will develop their skills in the three assessed components:

SLC- Speaking, Listening and Communicating

R - Reading

W- Writing.

Students working towards Entry Level 1

E1.2 Identify and extract the main information from short statements and explanations **SLC**

E1.3 Follow single-step instructions, asking for them to be repeated if necessary **SLC**

E1.9 Read simple sentences containing one clause **R**

E1.9 Write simple sentences containing one clause **W**

Students working towards Entry Level 2

E2.5 Clearly express straightforward information and communicate feelings and opinions on a range of straightforward topics. **SLC**

E2.11 Read and understand sentences with more than one clause. **R**

E2.20 Use adjectives and simple linking words in the appropriate way. **W**

E2. 13Use basic punctuation correctly (e.g. full stops, capital letters, question and exclamation marks) **W**

Students working towards Entry Level 3

E3.7 Listen to and respond appropriately to other points of view, respecting conventions of turn-taking. **SLC**

E3.9 Identify, understand and extract the main points and ideas in and from texts. **R**

E3.19 Write text of an appropriate level of detail and of appropriate length (including where this is specified) **W**

E3.15 Use mostly correct grammar (e.g. subject-verb agreement, consistent use of tense, definite and indefinite articles) **W**

Students working towards Level 1

L1. 1 Identify relevant information and lines of argument in explanations or presentations. **SLC**

L1.7 Use appropriate phrases, registers and adapt contributions to take account of audience, purpose and medium. **SLC**

L1.10 Compare information, ideas and opinions in different texts. **R**

L1.12 Recognise that language and other textual features can be varied to suit different audiences and purposes. **R**

L1.24 Use format, structure and language appropriate for audience and purpose. **W**

L1.21 Spell words used most often in work, study and daily life, including specialist words. **W**

KS4 MATHS FUNCTIONAL SKILLS

During this half term students will consolidate their work from the previous half term on place value and addition and subtraction. They will continue to work on their maths fluency skills by over learning their number bonds (addition and subtraction) and times table facts. They will continue to practise their money skills in their independent living lessons.

Students working towards Entry Level 1

- addition and subtraction within 20
- solve word problems involving addition and subtraction
- Tell time to the hour (o'clock) and half hour
- Use the language of time (before/after)
- learn the order of units of time (seconds, minutes, hours, days etc)
- Multiplication and division, counting in 2s, 5s and 10s and make simple arrays, describe equal groups.

Students working towards Entry Level 2

- Addition and subtraction within 100
- Solve missing number problems
- Time - tell time to the nearest 5 minutes
- Name and order - months of the year and seasons
- Multiplication and division (2-, 5- and 10- times tables)
- Revise naming and describing 2D and 3D shapes
- Money - make amounts up to £2 in coins, use £5, £10 and £20 notes

Students working towards Entry Level 3

Continue to consolidate the four operations.

- Addition and subtraction within 1000
- Solve missing number problems
- Check calculations using the inverse operation
- Multiply or divide a 2-digit number by a 1-digit number
- Focus on 2-, 4-, 8- times tables and the relationship between them
- Time - convert units of time, read 12- and 24- hour clocks
- Know that there are 365 days/52 weeks in a year

Students working towards Level 1

- Time - tell time to the minute, convert between units of time, know how many days in a month
- Solve problems involving the 4 operations (+, -, X and division)
- Fractions and decimals, including calculating with fractions, converting between fractions and decimals

KS4 CURRICULUM CONTINUED

PSHE

This half term in PSHE, we will be focusing on Relationships and Sexual Health Education.

Students will develop their understanding of managing conflict, recognising safe and healthy relationships, and navigating crushes, strong feelings, and attraction. We will also explore readiness for intimacy, including safe sex, as well as same-sex and LGBT attraction, to support students in building respectful, informed, and confident relationships.

Science

This half term, those working for their Entry Level Certificate in Science (ELC) will be working on 'Chemistry in the Real World.'

We are also going to be starting a new cohort of students on their ELC and they will be working on 'Chemistry - elements, mixtures and compounds.' Those not working for their ELC will be working for an AQA unit award in 'States of matter: Solids, liquids and gases.'

PE

During Spring 1, pupils will be carrying on with their chosen activity options. These include; Hiking/orienteering, racket sports, invasion games, dance and fitness.

Pupils have been overwhelmingly positive about being able to choose the activity they want to take part in. This will help them to remain engaged in a physical task they want to carry on with into their adult lives.

Computing

Being safe and responsible online - This half term looks at how students are introduced to the foundations of safe and responsible online behaviour through interactive, discussion-based lessons. They develop key digital vocabulary and explore personal identity, online risks, privacy, and respectful digital interaction using real-world scenarios and practical examples. A strong emphasis is placed on empathy, self-awareness, and protective strategies, helping learners build confidence and begin to reflect thoughtfully on their digital footprint and online choices.

Religious Education

During this half term, students will explore questions such as: How do Sikhs show their commitment? They will study for an AQA award: Introduction to Sikhism. This unit helps pupils to gain a deeper understanding of a fundamental belief of Sikhs. It builds on knowledge of Sikhi, and helps pupils understand what commitment means.

The lessons will aim to develop pupil knowledge and create a bridge between pupils' experiences and the religious theme.

Students will also develop their understanding of symbols and values that are in the religious teachings we are studying.

PREPARING FOR ADULTHOOD

| Overview | Independent Travel | Cooking | Careers | World Around Us |
|--------------------|--------------------|-----------------|-----------------|-----------------|
| Week 1 5/01/26 | Mexico | Tuvalu | Hungary | Italy/England |
| Week 2 12/01/26 | Italy/England | Mexico | Tuvalu | Hungary |
| Week 3 19/01/26 | Hungary | Italy & England | Mexico | Tuvalu |
| Week 4 26/01/26 | Tuvalu | Mexico | Italy & England | Mexico |
| Week 5 02/02/26 | Mexico | Tuvalu | Hungary | Italy & England |
| Week 6 09/02/26 | Italy & England | Mexico | Tuvalu | Hungary |

PRACTICAL LEARNING

| | |
|---|--|
| <div><div>Tuesday</div><div>Art</div><div>Cooking</div><div>Outdoor adventure</div><div>Forest School</div><div>Animal Care</div><div>Music</div></div> | <p>Our Tuesday practical learning options are designed to reflect the interests of pupils at Weatherfield while supporting not only academic progress, but also emotional, sensory, physical, and social development. All afternoon subjects have strong cross-curricular links and offer enrichment experiences that promote lifelong skills.</p> <p>Through these sessions, pupils develop independence in cooking, build resilience during Outdoor Adventure, and strengthen teamwork skills in Forest School. In Animal Care, they learn empathy and responsibility, while Art and Music help them explore and express their emotions. Additionally, students will have the opportunity to study for AQA Unit Awards, building a portfolio that recognises their achievements across these practical areas.</p> <p>Each of these opportunities gives pupils a real sense of achievement and fosters positive attitudes towards learning. Our aim is to nurture enthusiastic, confident, and well-rounded learners who are willing to try new experiences and grow from them.</p> |
| <div><div>Wednesday</div></div> | <p>This term, we will be using our Wednesday afternoons to work on AQA Unit Awards linked to our cross-curricular topics and English. Our focus will begin with awards related to the Second World War, allowing students to deepen their understanding while developing key skills. Throughout their time in KS4, students will have the opportunity to build a growing portfolio of AQA Unit Awards that recognise their achievements and support their progression.</p> |

DATES FOR YOUR DIARY

| | |
|---------------------|---|
| Spring term dates | Term Starts: Monday 5th January 2026 Term Ends: Friday 27th March 2026 |
| Class photos | Thursday 15 th January |
| Safer Internet Week | Monday 9 th February – Friday 13 th February |
| Half Term | Monday 16 th February – Friday 20 th February |